

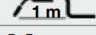





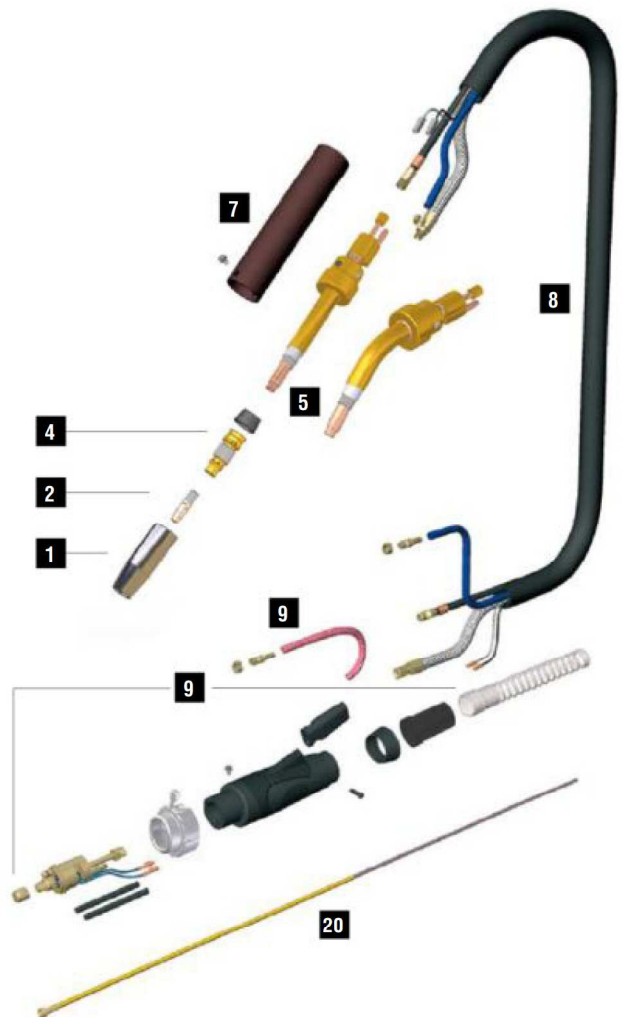
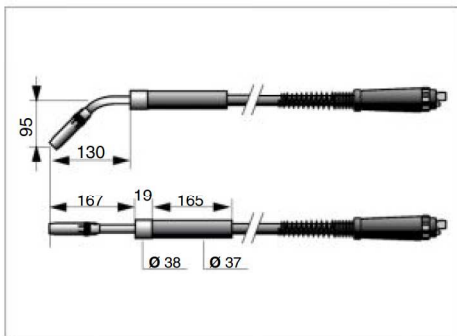
AUTOTMAX 4001



CE EN60974-7

CODE	↔		📄	📺	 EURO
MB0604	1,5 m	5'	0°		
MB0603	3 m	10'	0°		
MB0605	1,5 m	5'	45°		
MB0606	3 m	10'	45°		

TECHNICAL DATA		
AUTOTMAX 4001		
	1,3 kg	2.87 lb
		
V PEAK	113	
	1,0 ÷ 2,4 mm	.040" ÷ 3/32"
X 100%	450A CO ₂ - 400A Mix	
	2÷4 bar	
	1,6 l/min	



	CODE			Ø		↔	REF		
1	MC0011		heavy duty nozzle	16 mm	5/8"	82 mm	3-7/32"	-	5
1	MC0012		heavy duty nozzle	18 mm	23/32"	82 mm	3-7/32"	-	5
1	MC0013		heavy duty nozzle	20 mm	25/32"	82 mm	3-7/32"	-	5
1	MC0298		heavy duty nozzle	14 mm	9/16"	82 mm	3-7/32"	-	5
2	MD0250-78		M9x1 - CuCrZr	0,8 mm	.030"	38 mm	1"-1/2	-	20
2	MD0250-79		M9x1 - CuCrZr	0,9 mm	.035"	38 mm	1"-1/2	-	20
2	MD0250-80		M9x1 - CuCrZr	1,0 mm	.040"	38 mm	1"-1/2	-	20
2	MD0250-82		M9x1 - CuCrZr	1,2 mm	.045"	38 mm	1"-1/2	-	20
2	MD0250-84		M9x1 - CuCrZr	1,4 mm	.052"	38 mm	1"-1/2	-	20
2	MD0250-86		M9x1 - CuCrZr	1,6 mm	1/16"	38 mm	1"-1/2	-	20
2	MD0250-90		M9x1 - CuCrZr	2,0 mm	5/64"	38 mm	1"-1/2	-	20
2	MD0250-94		M9x1 - CuCrZr	2,4 mm	3/32"	38 mm	1"-1/2	-	20
4	ME0141		M9X1 - brass			51 mm	2"	-	5
20	GM0540		yellow steel liner	1,2 ÷ 1,6 mm	.045" ÷ 1/16"	3 m	10'	124.0041	1

	CODE			
5	MG0035		Autotmax 4001 torch head - 0°	1
5	MG0036		Autotmax 4001 torch head - 45°	1
5	MQ0340		insulator	1
7	MP0125		handle	1
8	MN0080		cable assembly - 3 m / 10'	1

	CODE			
8	MN1039		cable assembly - 1,5 m / 5'	1
9	AR0102		EURO connector	1
9	BW0480		EURO nut	1
9	FA0026		liner nut M10x1	10
9	MT0101		Back box kit	1

8a Control leads

8g Wire conduit + gas

8d Water inlet hose

8f Cover

Water outlet power cable

8e

	CODE	↔
8a	BX0733	3 m / 10'
8d	QB0076	3 m / 10'
8e	QA0019	3 m / 10'
8f	MQ0205	3 m / 10'
8g	QB0090	3 m / 10'

STANDARD

FOR ALL WEAR PARTS SEE PAGE 276